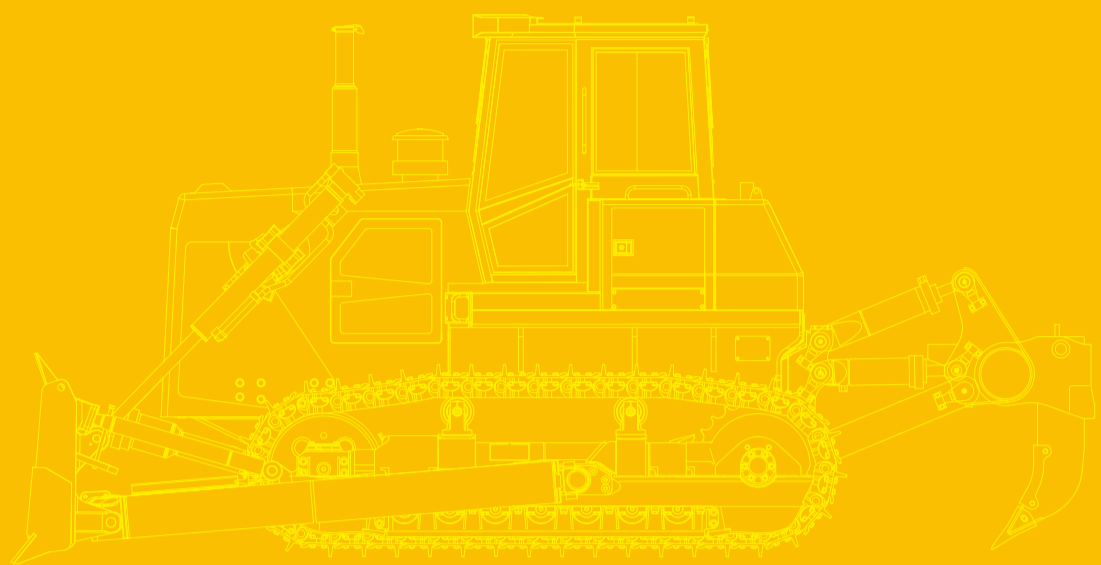


Crawler bulldozer

LG320\LG320C\LG320W



WWW.AMGVIAL.COM.AR

📍 Acceso oeste KM 47 – General Rodríguez Buenos Aires
Camino de cintura 4321 – Esteban Echeverría Buenos Aires

☎ (11) 2010 5179
✉ ventas@amgvial.com.ar



Main Specifications

Overall Specifications



Engine overload protection

Powerful transmission system

Shorter duty cycle



Cummins Country III engine, add intercooling CAC, optimization Fuel supply system to improve fuel efficiency and improve mobility More powerful, reliable and environmentally friendly;



Using large volume fuel tank, the fuel tank volume reaches 640L, continuous working time is more durable;



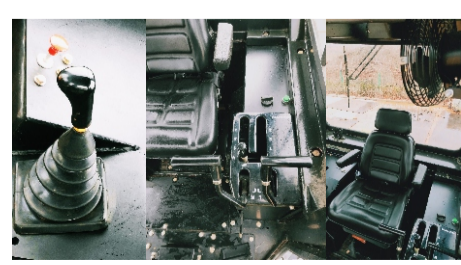
The layout of the whole machine is reasonable, comfortable driving and convenient maintenance, The color is simple and elegant, and the paint quality is high;



Box type blade welding structure optimization and improvement, high structural strength, The blade is more adaptable to harsh working conditions, and the overall level Support, easy to install;



Centralized control combined LCD instrument panel, with Engine data sharing, dynamic Line monitoring, accurate and reliable, and can be faulty at the same time Diagnosis and historical fault query;



Ergonomic design of cab decoration, arm placement It is more comfortable to place; overall improve driving comfort; The design of the working device is reasonable, the operation is comfortable and the control is accurate;

Model	LG320(Standard Bulldozer)	LG320C(Coal Bulldozer)	LG320W(Rock Bulldozer)
Engine			
Engine Model	NTA855-C360S10		
Engine Power(kw/hp)	257/2000		
Maximum Torque(N.m/r/min)	1509		
Form	In line, four stroke, supercharged intercooling		
Fuel tank (L)	640		
Total Displacement (L)	14		
Engine fuel consumption(g/kwh)	212		
Blade			
Standard Blade Type	Straight Tilt Blade	Coal Pushing Blade	Straight Tilt Blade
Match Blade Type	Angle Blade,Half U Blade	/	Angle Blade,Half U Blade
Blade WidthxHeight (mm)	Straight Tilt :4130 × 1590	Half U: 4130 × 1745	Straight Tilt:4130 × 1590
	Angle:5000 × 1140	Coal Pushing: 4755 x 1710	Angle:5000 × 1140
	Half U: 4130 × 1745	/	Half U: 4130 × 1745
Blade Capacity(m³)	Straight Tilt: 10; Angle: 6.2; Half U: 11.7	11.7	Straight Tilt: 10; Angle: 6.2; Half U: 11.7
Max.Lifting Height(mm)	1560/1703/1560	1560	1560/1703/1560
Max.Dinging Depth(mm)	560/630/560	560	560/630/560
Type of scarifier	Three teeth (single tooth)		
Track Parameter			
Track boards(each side)	41		
Track Width(mm)	560		
Sprocket pitch (mm)	228.6		
Track Center Length(mm)	2140		
Entrusted Sprocket Number(each side)	2		
Track Roller(each side)	7		
Groud Pressure(Kpa)	105		
Min.Ground Clearance(mm)	500		
Gradeability (°)	30		
Vehicle Parameters			
Dimensions(mm)	With ripper	/	
Length x width x height	Without ripper	6880 × 4130 × 3688	6880 × 4130 × 3688
Vehicle quality (without ripper)(t)		34.5	34.8
Water Capacity (L)	121		
Speed forward(km/h)	3.6; 6.6; 11.5		
Reverse speed(km/h)	4.4; 7.8; 13.5		